



DJ Civils Ltd

ENABLING | GROUNDWORKS | CIVIL ENGINEERING

**PROVIDING SAFETY
AND QUALITY**



CONTENTS

- 4.** About us
 - 8.** Sector and services
 - 12.** Groundworks
 - 16.** Drainage
 - 18.** Utilities
 - 22.** Highways
 - 24.** Landscaping
 - 28.** Earthworks
 - 30.** Remediation
 - 34.** Streetworks - Franklin Infrastructure
 - 36.** Contact
-

ABOUT US

DJ Civils operates in the Southeast of England, specialising in all aspects of Groundworks, Civil Engineering and Traffic Management.

Everything we do stems from our core values which ensure quality, consistency and safety.

With a team dedicated to each project we promote personal accountability. We ensure we have the right attitude, use modern techniques and reflect changing legislation.

OUR FOUR PILLARS



HEALTH & SAFETY

zero
Reportable accidents

97% Average external H&S audit score



PROGRAMME ASSURANCE

“DJ Civils always provides us accurate and practical timescales, giving us project certainty”

Commercial Manager, Countryside Partnerships



QUALITY 'RFT'
(RIGHT FIRST TIME)



PARTNERSHIP

78%
of revenues from repeat customers

MEET THE LEADERSHIP TEAM



Daniel Donohoe
Director

Dan takes ultimate responsibility for the commercial direction of DJ Civils.

He has 20 years' experience in the construction industry, starting his career working for Tier 1 Main Contractor, Bam Nuttall, as a Site Engineer. Dan progressed through the ranks to become a Contracts Manager before co-founding DJ Civils in 2017.



James Beale
Director

James oversees the estimating, planning and operational side of the Business.

With over 20 years' experience, James has worked in a variety of roles in the construction industry, originally training as a Site Engineer, he progressed to senior positions at S Walsh and Sons, Bam Nuttall and Kier, Together with Dan, James co-founded DJ Civils in 2017.



Jack Lambert
Director

Jack spearheads traffic management solutions and stakeholder engagement.

Jack has been with the company for over 8 years, leading the implementation of several prominent projects in London's public infrastructure. These projects include the Southbank Place Development, the Northern Line Extension (London Underground), and other projects in the Mayor of London's office.



Jonathan Franklin
Operational Manager

Jonathan's day to day role includes NSWRA Management and DFT Street Management.

Jonathan has been working in the Highways Industry for 24 years having held senior roles at Mouchel Parkman and McNicholas PLC. He has been awarded Fellowship status of the Institute of Highway Engineers and holds the LANTRA - 12d M7 - Traffic Management designer qualification.

Our leadership team have first hand onsite experience and understand the clients needs. Supported by a skilled team of over 100 professionals.

70+
YEARS'
EXPERIENCE

GIVING BACK



OVER £30,000 RAISED
FOR CHARITY AND
COUNTING...

Dandelion Time offers help to children with very challenging emotional issues, often resulting from trauma, violence or serious health difficulties in the family.

Their approach is family based and creates opportunities for new beginnings and improved relationships. The service recognises the importance of being in a peaceful natural environment, absorbing children in calming hands on activities.

DJ Civils holds events throughout the year to support this Charity. We invite our staff, clients and suppliers to support them too.

As well as Dandelion Time, DJ Civils chooses other charities throughout the year to support on top of our main one.



“BEING AT DANDELION TIME... I DIDN'T
EVEN KNOW I HAD FEARS ANYMORE”

Jasmine, Dandelion Time



SECTORS



COMMERCIAL

Construction of light and heavy weight industrial units, offices and retail buildings, including all structural foundations, drainage and external finishings.



RESIDENTIAL

Working with private and PLC residential developers to construct new build developments, including demolition, remediation, groundworks and infrastructure works.



PUBLIC

Working with our clients to design, build and maintain infrastructure projects such as roads, bridges and public facilities such as hospitals, schools and leisure centres.



ENERGY

Supporting our clients on all aspects of remediation and infrastructure investment works for plant and distribution centres across the southeast.

SERVICES OVERVIEW



GROUNDWORKS

SEE PAGE 12



DRAINAGE

SEE PAGE 16



UTILITIES

SEE PAGE 18



HIGHWAYS

SEE PAGE 22



LANDSCAPING

SEE PAGE 24



EARTHWORKS

SEE PAGE 28



REMEDICATION

SEE PAGE 30



STREETWORKS

SEE PAGE 34

DELIVERING PROJECTS NATIONWIDE

- Multiple projects
- Specific projects



“HAVING DONE MULTIPLE PROJECTS
WITH DJ’S ACROSS THE COUNTRY,
THEY HAVE DELIVERED
CONSISTENTLY FOR US AND FEEL
VERY MUCH LIKE PARTNERS”

Project Manager, Berkeley Group



GROUNDWORKS

DJ Civils has substantial experience with a number of groundworks & civil engineering skills:

- Site Clearance
- Enabling Works
- Earthworks
- Basement Excavations
- Pile Caps, Groundbeams and Floor Slabs
- Tower Crane and Hoist Bases
- Reinforced Embankments



GROUNDWORKS - EASTERN QUARRY PH2

Eastern Quarry comprises approximately 2,400 homes, divided into phases as part of a joint venture (JV) between Countryside Partnerships and Clarion Housing. Phase 2 of the works includes the construction of all new roads, footpaths, drainage systems, mains utilities, and service installations for plots, as well as reinforced foundations, private drainage systems, and external landscaping. Included in the phase are three apartment blocks, one of which is a six-storey reinforced concrete frame DJ Civils are delivering.

- SCOPE:**
- Piling attendance, pile caps and ground beams
 - Reinforced foundations and concrete frame
 - Surface and foul drainage
 - Soft & hard landscaping
 - Highway & footway construction
 - NHBC Standards

VALUE:
£ 10.4 million

DURATION:
2.5 years

SECTOR:
Residential

LOCATION:
Dartford, Kent





DRAINAGE

DJ Civils has a broad range of experience within the drainage sector, notably the installation of:

- Storm & Foul Water Drainage
- Connecting into Existing Live Services
- Attenuation Tanks
- Stormwater Outfalls
- Rising Mains & Pumping Chambers
- Deep Shaft Manholes
- Cess & Septic Tank Systems



DRAINAGE - NORTHFLEET

Awarded as part of a wider infrastructure package, DJ Civils was required to install over 500 meters of surface water drainage up to 450mm in diameter. This included multiple attenuation tanks and 1,800mm hydrobrake manholes. The project also involved full carriageway and footway construction over an area exceeding 5,000 square meters. The works were completed within an extremely tight schedule to meet the client's deadline for practical handover.

SCOPE:

- Geo-light storage tanks
- Road gullies
- Hydrobrake chambers
- Road and footway construction
- Asphalt surfacing
- Traffic Management

VALUE:

£1.1M

DURATION:

8 weeks

SECTOR:

Commercial

LOCATION:

Kent



UTILITIES

DJ Civils provides installation and attendance works for a full range of network & utility providers, including; Electric, Gas, District Heating, Water and Communications.

With a team experienced in liaising with local authorities and an adaptive multi-skilled workforce on site, DJ Civils can deliver a number of services:

- Road Crossings & Reinstatements
- Streetlighting & CCTV Bases
- Sub-Stations, Sub-Structure & Superstructure
- Ducting Chambers and Valve Pits
- Utility Attendances including Lifting Arrangements
- Trenching Works
- EUSR Trained Operatives
- NRSWA Managers & Supervisors



UTILITIES - KIDBROOKE F & G

This is one of the largest phases on the Kidbrooke Park development. Our package included all of the works required to enable the site for the construction of RC frames. DJ Civils were required to provide all necessary attendances to enable installation of utility diversions including, District Heating, HV and LV cables, Potable Water and LP gas main, including the removal of all redundant services. Working in accordance with HSG47 and employing the services of vacuum excavators, all utilities were safely excavated and diverted as required by the Client.

SCOPE:

- Enabling
- Bulk Dig
- Utility Diversions
- Material Movement
- Pile Attendance
- Pile Mat Construction
- Utility Installation
- Haul Road Construction

VALUE:

£2 million

DURATION:

26 weeks

SECTOR:

Public

LOCATION:

Kidbrooke, London





HIGHWAYS

Utilising civil and structural engineers, DJ Civils will liaise with local authorities for the correct approval to undertake highway and roadworks projects.

All our workforce are correctly trained and capable for a multitude of highway projects:

- Trench Reinstatements & Road Crossings
 - Kerbs, Edging Kerbs, Tactile Paving & Trief Kerbs
 - Street Furniture
- Road Construction to SHW
 - Surfacing & White Lining
 - Manhole & Pothole Repairs
 - Streetlighting



HIGHWAYS - BRENTWOOD

Awarded as a complete Section 278 package associated with the new industrial units, DJ Civils worked closely with the local highway authority to reduce the duration of the programme. This collaborative approach ensured minimal impact on the local community.

All the permitting, stakeholder engagement and traffic management deployment was carried out by our sister company Franklin Infrastructure.

SCOPE:	VALUE:
• New Footways	£ 2 million
• Roundabout Junction	
• Installation of street light infrastructure and columns	DURATION:
• White Lining and High Friction Surfacing	26 weeks
• Kerb Installation	SECTOR:
• Full Road Construction	Public
• Drainage	LOCATION:
• Earthworks	Brentwood, Essex
• Highway Signage	



LANDSCAPING

All elements of soft and hard landscaping including subsoil, topsoil, tree pits and planting, kerbing, paving, surfacing, street furniture and playgrounds.

- MUGA pitches
- Rubber crumb playgrounds
- Remedial and reinstatement works
- Highway street scene upgrades
- NRSWA trained operatives
- Deployment of traffic management



LANDSCAPING - ROCHESTER PHASE 4

Works included the development of a new link road and park area to facilitate a new school in Rochester, Medway. DJ Civils was required to install a new surface and foul water drainage system, including associated river wall outfalls and connections into the existing network. In addition, the new carriageway, footpaths, soft and hard landscaping were all built to KCC and Medway standards.

SCOPE:

- Soft and hard landscaping
- Deep drainage, including S106 heading connections
- Surface water attenuation and river wall outfalls
- Permitting, licencing and traffic management
- Highway construction to KCC/ Medway standards

VALUE:

£3.4 million

DURATION:

52 weeks

SECTOR:

Public

LOCATION:

Medway, Kent





EARTHWORKS

DJ Civils carries out all elements of Earthworks, which include bulk excavation for basements and undercrofts, cut and fill profiling, material management (such as stockpiling, drying, and processing), as well as surcharging and stabilisation.

- Topographical surveys, including cut/fill modelling
- GPS operated machinery
- Preparation of development platforms
- In-situ testing compliant with SHW
- Site clearance, including removal of fauna and flora
- Earth retaining structures



EARTHWORKS - BRENTWOOD EARTHWORKS

DJ Civils were awarded a contract to process an existing stockpile and place it in accordance with the specification for highway works. The development platform was prepared for the construction of several large commercial units. The site contained a large pond that required dewatering, vegetation removal, and backfilling in compacted layers. The works were completed ahead of schedule while minimising the impact on the operational portion of the site.

- SCOPE:

 - Vegetation clearance
 - Groundwater management
 - Cut/fill modelling
 - Earthworks
 - Dust and noise management

VALUE:
£100k

DURATION:
5 weeks

SECTOR:
Commercial

LOCATION:
Essex



REMEDIATION

Onsite management of hazardous materials including testing, isolation and disposal to transform brownfield sites to commercial or residential developments:

- Soil sampling and material classification
- Asbestos trained operatives
- Stockpile management
- Surface and ground water protection
- Processing and screening of materials
- Material management including recycling and reuse of waste



REMEDIATION - KIDBROOKE PHASE 2 ENABLING

This package included all of the enabling works required for the construction of the Phase 2 West apartment block. The phases of works were made particularly challenging due to the significant number of obstructions in the ground. Specialist plant was mobilised to remove the obstructions and crush them up for disposal.

SCOPE:

- Enabling Works
- Bulk Dig
- Pile Mat Construction
- Pile Attendance
- Road Construcion
- Utility Installation
- Drainage
- Utilities
- RC Works
- Muck Away

VALUE:

£750k

DURATION:

16 weeks

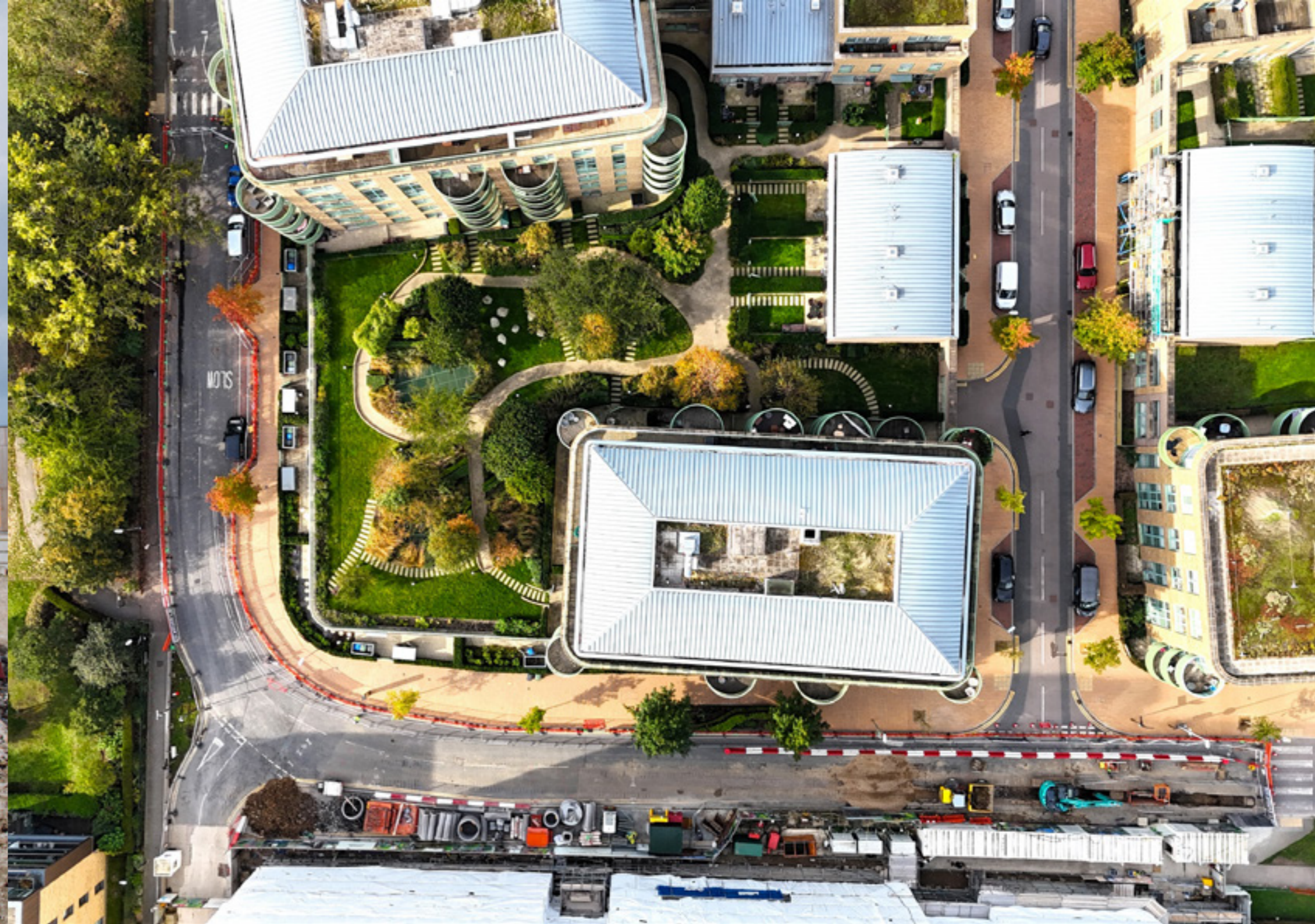
SECTOR:

Residential

LOCATION:

Kidbrooke, London





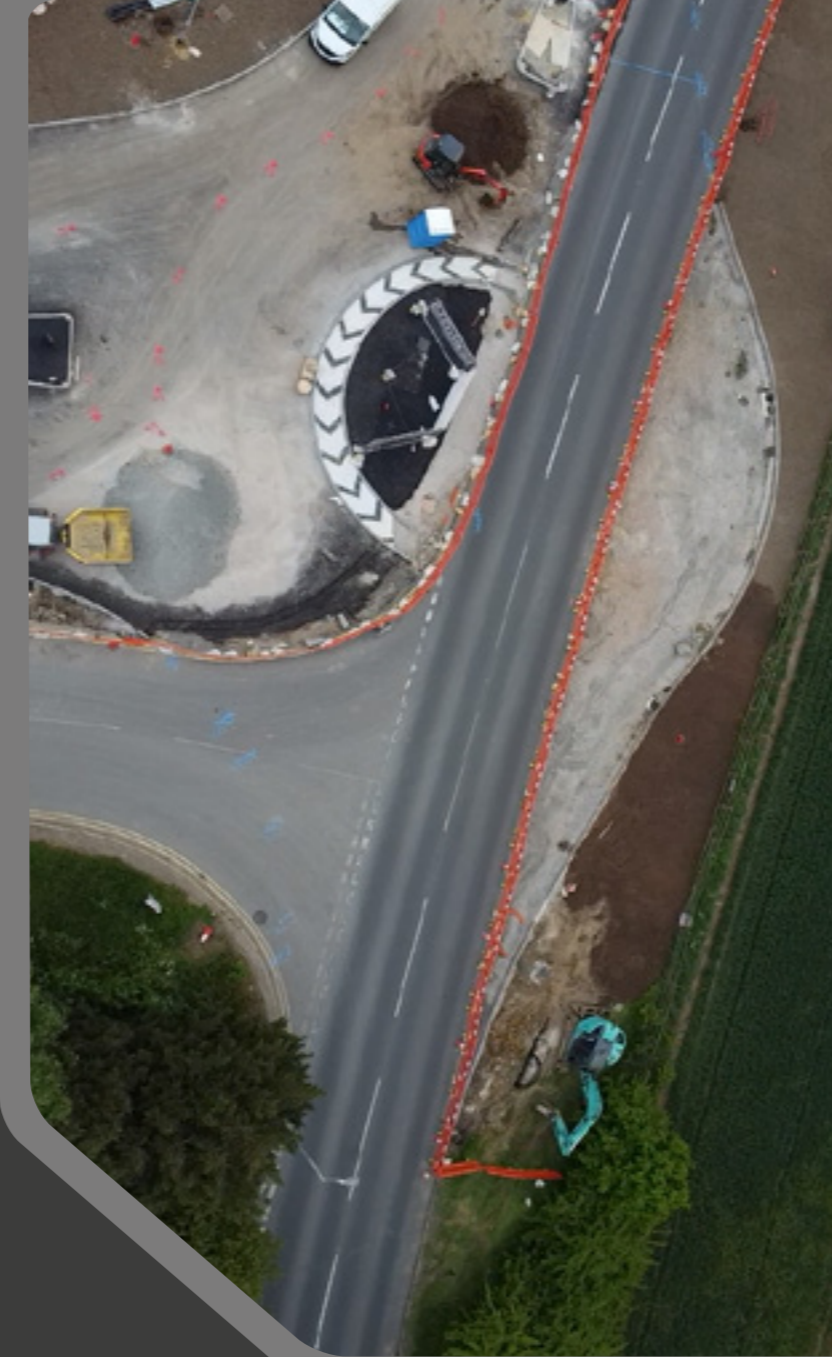
Our Sister Company

FRANKLIN INFRASTRUCTURE

Franklin Infrastructure are expert in delivering large scale projects on the public highway, mainly in central London and the home counties.

Our expertise focuses on the New Roads and Street Works Act 1991 (NRSWA) and the Traffic Management Act 2004 (TMA), and has been honed from over 15 years of experience of working with highway authorities. We know how to strike the delicate balance between enabling an ever-developing city, and managing some of the busiest networks in the country. We plan rigorously and execute our works efficiently.

- Street Works Consultancy
- Street Works Solutions
- Traffic Management and Design
- Topographical Surveys
- Multi Utility Installs
- Section 278 Agreements
- Mobile Access Platforms and Crane
- Traffic Inductive Loop Cutting
- Road Safety Audits
- Material Delivery and Removal (Logistics)
- Road Markings and Lining
- Highway Licensing (Hoarding, Scaffold Etc)



“KEEP THE UK MOVING.”
Franklin Infrastructure





CONTACT

🌐 | djcivils.com

☎ | 01304 802728

✉ | info@djcivils.com

